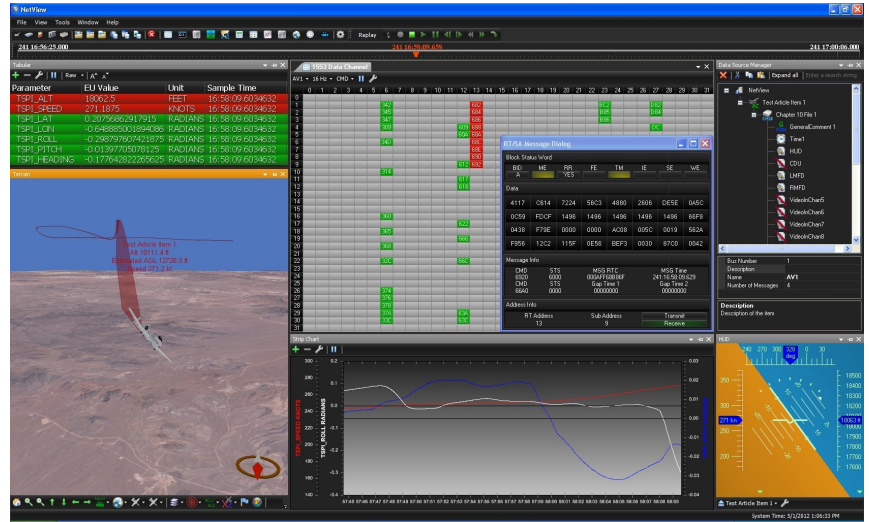


Highlights

- Developed for IRIG 106 Chapter 10
- Data Replay, Real-Time Publish/Subscribe
- Record CH10 Publish & DataHUB Streams
- Reproduce from CH10 Replay/Subscribe
- Dock/Float Displays across Monitors
- Raw CH10 Data Displays
- CH10 Data Type Exports
- RMM/Tape/CF Archive to Files
- Full Math Engine & Derived Parameters
- Auto Setup from TMATS Setup Records
- Full TMATS Import & Export
- Complete Developer SDK



Overview

NetView Data Fusion & Display provides real-time decoding, processing, display & distribution from IRIG 106 Chapter 10 data sources & network based instrumentation systems. NetView time aligns, reproduces & publishes from multiple independent CH10 data source types & formats. An SDK version is available for user developed decoders, data processing, displays, user database export/import & custom GUI's.

A NetView Manager provides the user interface foundation of NetView with a topology view of all projects, displays, data sources, channels, measurements & settings. NetView can perform as a real-time display client subscribing to multiple CH10 published streams, recording locally, going off-line to replay recorded data then go back to live data.

With a fully integrated DataHUB interface via USB, NetView provides multiple channels of live streaming real-time Chapter 10 PCM & IRIG time for simultaneous processing, display, reproduction, recording & publishing.

This block contains a collage of screenshots from the NetView software. At the top left is the NetView logo. Below it are several screenshots: a parameter list with values, a graph showing signal waveforms, a data table with columns for Sync, W1-W10, and V, and a system configuration window showing 'DataHUB' and 'PCM Input Channel' settings. At the bottom, there's a 'Table' window showing a grid of numerical data.

Row	Column 1	Column 2	Column 3	Column 4
Row 1	13872.50000	265.37500		0.20788
Row 2				-0.64938
Row 3				
Row 4	-0.48712	0.07889	-0.78183	
Row 5				

As of 9-1-2019

Tomorrow's Technology Today

sales@telspandata.com | telspandata.com

Data Sources

IRIG 106 Chapter 10

- RMM/Compact Flash/SCSI Tape
 - Local/Network Disk Files
 - CH10 Publishers/DataHUB's
 - CH10 from PCAP Files

Streaming Telemetry

- Telspan DataHUB

Network Instrumentation

- TTC Network Products
- ARDS & GPS UART



Data Decoders

IRIG 106 Chapter 10

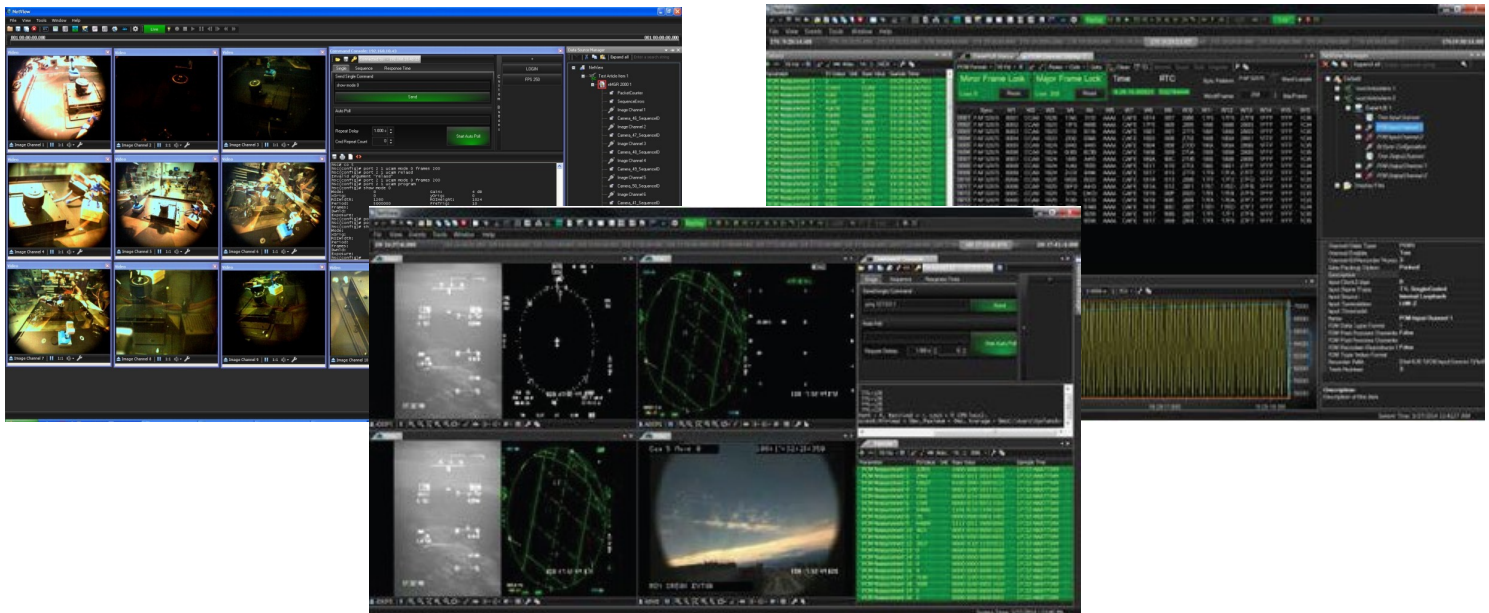
- Computer Generated Data
 - Time & PCM
- 1553, 16PP194, 429 & 1394
- Analog, Discrete, Message
- Video & Still/Dynamic Images
- Ethernet, UART, TSPI/CTS
 - Fibre Channel

TSPI

- ARDS, Novatel, NMEA

Network Instrumentation

- Time & PCM
- Video & High Speed Imagery
- Network XCVR



NetView Versions

- **NetView Professional:** All data sources/decoders/replay/display/record, SDK DLL's
 - **NetView Ultimate:** All data sources/decoders/replay/display/record, SDK DLL's, 2D/3D flight displays
 - **NetView Developer:** Same as Ultimate w/ developer SDK
 - **NetView Custom:** Facility/customer "unique" versions
- *Ask us about full use trial versions

Additional Details @
telspandata.com/NetView